

# CREEK BEACH

---

SURF

FLOOR PLANS



EMAAR

BUILDING 2

EMAAR

# DUBAI CREEK HARBOUR

## SURF AT CREEK BEACH

BUILDING 2

LEVEL 1

UNIT 101

1 BEDROOM

APARTMENT AREA	50.35 SQ.M.	541.96 SQ.FT.
BALCONY AREA	22.86 SQ.M.	246.06 SQ.FT.
TOTAL AREA	73.21 SQ.M.	788.02 SQ.FT.



# DUBAI CREEK HARBOUR

## SURF AT CREEK BEACH

BUILDING 2

LEVEL 1

UNIT 102

1 BEDROOM

APARTMENT AREA	55.46 SQ.M.	596.97 SQ.FT.
BALCONY AREA	25.86 SQ.M.	278.35 SQ.FT.
TOTAL AREA	81.32 SQ.M.	875.32 SQ.FT.



# DUBAI CREEK HARBOUR

## SURF AT CREEK BEACH

BUILDING 2

LEVEL 1

UNIT 103

1 BEDROOM

APARTMENT AREA	55.57 SQ.M.	598.15 SQ.FT.
BALCONY AREA	20.27 SQ.M.	218.18 SQ.FT.
TOTAL AREA	75.84 SQ.M.	816.33 SQ.FT.



# DUBAI CREEK HARBOUR

## SURF AT CREEK BEACH

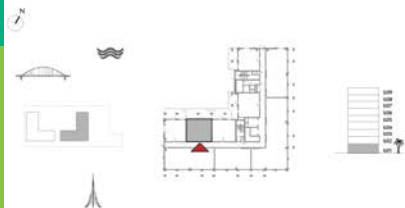
BUILDING 2

LEVEL 1

UNIT 104

1 BEDROOM

APARTMENT AREA	55.57 SQ.M.	598.15 SQ.FT.
BALCONY AREA	26.64 SQ.M.	286.75 SQ.FT.
TOTAL AREA	82.21 SQ.M.	884.90 SQ.FT.



OR PLAN 1. All dimensions are in imperial and metric, and measured from finish to finish excluding construction tolerances. 2. All materials, dimensions, and drawings are approximate only. 3. Information is subject to change without notice, at developer's discretion. 4. Actual area may vary from the stated area. 5. Drawings not to scale. 6. All images used are for illustrative purposes only and do not represent the actual size, features, specifications, fittings, and furnishings. 7. The developer reserves the right

EMAA

# DUBAI CREEK HARBOUR

## SURF AT CREEK BEACH

BUILDING 2

LEVEL 1

UNIT 105

1 BEDROOM

APARTMENT AREA	50.35 SQ.M.	541.96 SQ.FT.
BALCONY AREA	23.28 SQ.M.	250.58 SQ.FT.
TOTAL AREA	73.63 SQ.M.	792.54 SQ.FT.



OR PLAN 1. All dimensions are in imperial and metric, and measured from finish to finish excluding construction tolerances. 2. All materials, dimensions, and drawings are approximate only. 3. Information is subject to change without notice, at developer's discretion. 4. Actual area may vary from the stated area. 5. Drawings not to scale. 6. All images used are for illustrative purposes only and do not represent the actual size, features, specifications, fittings, and furnishings. 7. The developer reserves the right

EMAA

# DUBAI CREEK HARBOUR

## SURF AT CREEK BEACH

### BUILDING 2

LEVEL 2, 3, 4, 5, 6

UNIT 201, 301, 401, 501, 601

### 3 BEDROOM

APARTMENT AREA	123.82 SQ.M.	1332.79 SQ.FT.
BALCONY AREA	14.79 SQ.M.	159.20 SQ.FT.
TOTAL AREA	138.61 SQ.M.	1491.99 SQ.FT.





# DUBAI CREEK HARBOUR

## SURF AT CREEK BEACH

### BUILDING 2

LEVEL 2, 3, 4, 5, 6

UNIT 202, 302, 402, 502, 602

### 1 BEDROOM

APARTMENT AREA	55.32 SQ.M.	595.46 SQ.FT.
BALCONY AREA	8.40 SQ.M.	90.42 SQ.FT.
TOTAL AREA	63.72 SQ.M.	685.88 SQ.FT.



# DUBAI CREEK HARBOUR

## SURF AT CREEK BEACH

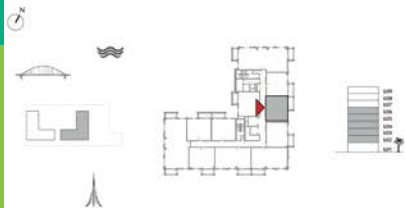
### BUILDING 2

LEVEL 2, 3, 4, 5, 6

UNIT 203, 303, 403, 503, 603

### 1 BEDROOM

APARTMENT AREA	55.48 SQ.M.	597.18 SQ.FT.
BALCONY AREA	8.40 SQ.M.	90.42 SQ.FT.
TOTAL AREA	63.88 SQ.M.	687.60 SQ.FT.



OR PLAN 1. All dimensions are in imperial and metric, and measured from finish to finish excluding construction tolerances. 2. All materials, dimensions, and drawings are approximate only. 3. Information is subject to change without notice, at developer's discretion. 4. Actual area may vary from the stated area. 5. Drawings not to scale. 6. All images used are for illustrative purposes only and do not represent the actual size, features, specifications, fittings, and furnishings. 7. The developer reserves the right

# DUBAI CREEK HARBOUR

## SURF AT CREEK BEACH

### BUILDING 2

LEVEL 2, 3, 4, 5, 6

UNIT 204, 304, 404, 504, 604

### 1 BEDROOM

APARTMENT AREA	59.35 SQ.M.	638.84 SQ.FT.
BALCONY AREA	7.40 SQ.M.	79.65 SQ.FT.
TOTAL AREA	66.75 SQ.M.	718.49 SQ.FT.



OR PLAN 1. All dimensions are in imperial and metric, and measured from finish to finish excluding construction tolerances. 2. All materials, dimensions, and drawings are approximate only. 3. Information is subject to change without notice, at developer's discretion. 4. Actual area may vary from the stated area. 5. Drawings not to scale. 6. All images used are for illustrative purposes only and do not represent the actual size, features, specifications, fittings, and furnishings. 7. The developer reserves the right

EMAA

# DUBAI CREEK HARBOUR

## SURF AT CREEK BEACH

### BUILDING 2

LEVEL 2, 3, 4, 5, 6

UNIT 205, 305, 405, 505, 605

### 2 BEDROOM

APARTMENT AREA	83.31 SQ.M.	896.74 SQ.FT.
BALCONY AREA	8.40 SQ.M.	90.42 SQ.FT.
TOTAL AREA	91.71 SQ.M.	987.16 SQ.FT.



# DUBAI CREEK HARBOUR

## SURF AT CREEK BEACH

### BUILDING 2

LEVEL 2, 3, 4, 5, 6

UNIT 206, 306, 406, 506, 606

### 2 BEDROOM

APARTMENT AREA	83.71 SQ.M.	901.05 SQ.FT.
BALCONY AREA	8.40 SQ.M.	90.42 SQ.FT.
TOTAL AREA	92.11 SQ.M.	991.47 SQ.FT.



# DUBAI CREEK HARBOUR

## SURF AT CREEK BEACH

### BUILDING 2

LEVEL 2, 3, 4, 5, 6

UNIT 207, 307, 407, 507, 607

### 1 BEDROOM

APARTMENT AREA	58.72 SQ.M.	632.06 SQ.FT.
BALCONY AREA	7.40 SQ.M.	79.65 SQ.FT.
TOTAL AREA	66.12 SQ.M.	711.71 SQ.FT.



# DUBAI CREEK HARBOUR

## SURF AT CREEK BEACH

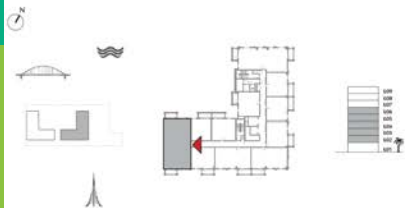
### BUILDING 2

LEVEL 2, 3, 4, 5, 6

UNIT 208, 308, 408, 508, 608

### 3 BEDROOM

APARTMENT AREA	126.98 SQ.M.	1366.80 SQ.FT.
BALCONY AREA	14.79 SQ.M.	159.20 SQ.FT.
TOTAL AREA	141.77 SQ.M.	1526.00 SQ.FT.



# DUBAI CREEK HARBOUR

## SURF AT CREEK BEACH

### BUILDING 2

LEVEL 2, 3, 4, 5, 6

UNIT 209, 309, 409, 509, 609

### 1 BEDROOM

APARTMENT AREA	55.56 SQ.M.	598.04 SQ.FT.
BALCONY AREA	8.40 SQ.M.	90.42 SQ.FT.
TOTAL AREA	63.96 SQ.M.	688.46 SQ.FT.





# DUBAI CREEK HARBOUR

## SURF AT CREEK BEACH

### BUILDING 2

LEVEL 2, 3, 4, 5, 6

UNIT 210, 310, 410, 510, 610

### 1 BEDROOM

APARTMENT AREA	55.56 SQ.M.	598.04 SQ.FT.
BALCONY AREA	8.40 SQ.M.	90.42 SQ.FT.
TOTAL AREA	63.96 SQ.M.	688.46 SQ.FT.



# DUBAI CREEK HARBOUR

## SURF AT CREEK BEACH

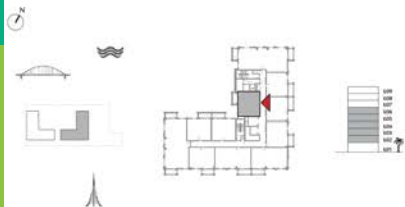
### BUILDING 2

LEVEL 2, 3, 4, 5, 6

UNIT 211, 311, 411, 511, 611

### 1 BEDROOM

APARTMENT AREA	55.46 SQ.M.	596.97 SQ.FT.
BALCONY AREA	7.58 SQ.M.	81.59 SQ.FT.
TOTAL AREA	63.04 SQ.M.	678.56 SQ.FT.



OR PLAN 1. All dimensions are in imperial and metric, and measured from finish to finish excluding construction tolerances. 2. All materials, dimensions, and drawings are approximate only. 3. Information is subject to change without notice, at developer's discretion. 4. Actual area may vary from the stated area. 5. Drawings not to scale. 6. All images used are for illustrative purposes only and do not represent the actual size, features, specifications, fittings, and furnishings. 7. The developer reserves the right

EMAA

# DUBAI CREEK HARBOUR

## SURF AT CREEK BEACH

BUILDING 2

LEVEL 7

UNIT 701

3 BEDROOM

APARTMENT AREA	123.82 SQ.M.	1332.79 SQ.FT.
BALCONY AREA	14.79 SQ.M.	159.20 SQ.FT.
TOTAL AREA	138.61 SQ.M.	1491.99 SQ.FT.



# DUBAI CREEK HARBOUR

## SURF AT CREEK BEACH

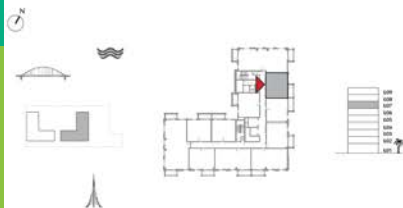
BUILDING 2

LEVEL 7

UNIT 702

1 BEDROOM

APARTMENT AREA	55.32 SQ.M.	595.46 SQ.FT.
BALCONY AREA	8.40 SQ.M.	90.42 SQ.FT.
TOTAL AREA	63.72 SQ.M.	685.88 SQ.FT.



OR PLAN 1. All dimensions are in imperial and metric, and measured from finish to finish excluding construction tolerances. 2. All materials, dimensions, and drawings are approximate only. 3. Information is subject to change without notice, at developer's discretion. 4. Actual area may vary from the stated area. 5. Drawings not to scale. 6. All images used are for illustrative purposes only and do not represent the actual size, features, specifications, fittings, and furnishings. 7. The developer reserves the right

EMAA

DUBAI CREEK  
HARBOUR

SURF AT  
CREEK BEACH

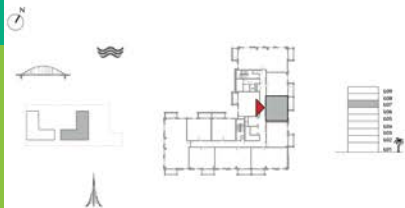
BUILDING 2

LEVEL 7

UNIT 703

1 BEDROOM

APARTMENT AREA	55.48 SQ.M.	597.18 SQ.FT.
BALCONY AREA	8.40 SQ.M.	90.42 SQ.FT.
TOTAL AREA	63.88 SQ.M.	687.60 SQ.FT.



OR PLAN 1. All dimensions are in imperial and metric, and measured from finish to finish excluding construction tolerances. 2. All materials, dimensions, and drawings are approximate only. 3. Information is subject to change without notice, at developer's discretion. 4. Actual area may vary from the stated area. 5. Drawings not to scale. 6. All images used are for illustrative purposes only and do not represent the actual size, features, specifications, fittings, and furnishings. 7. The developer reserves the right

EMAA

# DUBAI CREEK HARBOUR

## SURF AT CREEK BEACH

BUILDING 2

LEVEL 7

UNIT 704

1 BEDROOM

APARTMENT AREA	59.35 SQ.M.	638.84 SQ.FT.
BALCONY AREA	7.40 SQ.M.	79.65 SQ.FT.
TOTAL AREA	66.75 SQ.M.	718.49 SQ.FT.



# DUBAI CREEK HARBOUR

## SURF AT CREEK BEACH

BUILDING 2

LEVEL 7

UNIT 705

2 BEDROOM

APARTMENT AREA	83.31 SQ.M.	896.74 SQ.FT.
BALCONY AREA	8.40 SQ.M.	90.42 SQ.FT.
TOTAL AREA	91.71 SQ.M.	987.16 SQ.FT.



OR PLAN 1. All dimensions are in imperial and metric, and measured from finish to finish excluding construction tolerances. 2. All materials, dimensions, and drawings are approximate only. 3. Information is subject to change without notice, at developer's discretion. 4. Actual area may vary from the stated area. 5. Drawings not to scale. 6. All images used are for illustrative purposes only and do not represent the actual size, features, specifications, fittings, and furnishings. 7. The developer reserves the right

EMAA

# DUBAI CREEK HARBOUR

## SURF AT CREEK BEACH

BUILDING 2

LEVEL 7

UNIT 706

2 BEDROOM

APARTMENT AREA	83.71 SQ.M.	901.05 SQ.FT.
BALCONY AREA	8.40 SQ.M.	90.42 SQ.FT.
TOTAL AREA	92.11 SQ.M.	991.47 SQ.FT.





DUBAI CREEK  
HARBOUR

SURF AT  
CREEK BEACH

BUILDING 2

LEVEL 7

UNIT 707

1 BEDROOM

APARTMENT AREA	58.72 SQ.M.	632.06 SQ.FT.
BALCONY AREA	7.40 SQ.M.	79.65 SQ.FT.
TOTAL AREA	66.12 SQ.M.	711.71 SQ.FT.



# DUBAI CREEK HARBOUR

## SURF AT CREEK BEACH

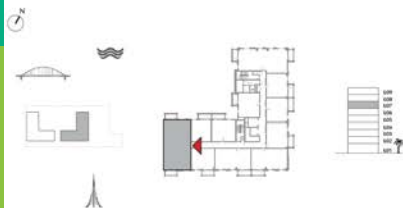
BUILDING 2

LEVEL 7

UNIT 708

### 3 BEDROOM

APARTMENT AREA	126.98 SQ.M.	1366.80 SQ.FT.
BALCONY AREA	14.79 SQ.M.	159.20 SQ.FT.
TOTAL AREA	141.77 SQ.M.	1526.00 SQ.FT.



OR PLAN 1. All dimensions are in imperial and metric, and measured from finish to finish excluding construction tolerances. 2. All materials, dimensions, and drawings are approximate only. 3. Information is subject to change without notice, at developer's discretion. 4. Actual area may vary from the stated area. 5. Drawings not to scale. 6. All images used are for illustrative purposes only and do not represent the actual size, features, specifications, fittings, and furnishings. 7. The developer reserves the right

EMAA

# DUBAI CREEK HARBOUR

## SURF AT CREEK BEACH

BUILDING 2

LEVEL 7

UNIT 709

1 BEDROOM

APARTMENT AREA	55.56 SQ.M.	598.04 SQ.FT.
BALCONY AREA	8.40 SQ.M.	90.42 SQ.FT.
TOTAL AREA	63.96 SQ.M.	688.46 SQ.FT.



# DUBAI CREEK HARBOUR

## SURF AT CREEK BEACH

BUILDING 2

LEVEL 7

UNIT 710

1 BEDROOM

APARTMENT AREA	55.56 SQ.M.	598.04 SQ.FT.
BALCONY AREA	8.40 SQ.M.	90.42 SQ.FT.
TOTAL AREA	63.96 SQ.M.	688.46 SQ.FT.



# DUBAI CREEK HARBOUR

## SURF AT CREEK BEACH

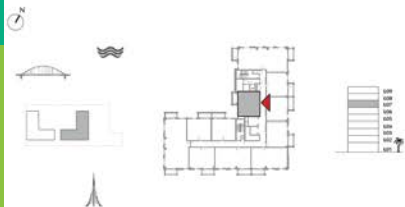
BUILDING 2

LEVEL 7

UNIT 711

1 BEDROOM

APARTMENT AREA	55.46 SQ.M.	596.97 SQ.FT.
BALCONY AREA	7.60 SQ.M.	81.81 SQ.FT.
TOTAL AREA	63.06 SQ.M.	678.78 SQ.FT.



OR PLAN 1. All dimensions are in imperial and metric, and measured from finish to finish excluding construction tolerances. 2. All materials, dimensions, and drawings are approximate only. 3. Information is subject to change without notice, at developer's discretion. 4. Actual area may vary from the stated area. 5. Drawings not to scale. 6. All images used are for illustrative purposes only and do not represent the actual size, features, specifications, fittings, and furnishings. 7. The developer reserves the right

EMAA

# DUBAI CREEK HARBOUR

## SURF AT CREEK BEACH

BUILDING 2

LEVEL 8, 9

UNIT 801, 901

3 BEDROOM

APARTMENT AREA	123.82 SQ.M.	1332.79 SQ.FT.
BALCONY AREA	14.79 SQ.M.	159.20 SQ.FT.
TOTAL AREA	138.61 SQ.M.	1491.99 SQ.FT.



OR PLAN 1. All dimensions are in imperial and metric, and measured from finish to finish excluding construction tolerances. 2. All materials, dimensions, and drawings are approximate only. 3. Information is subject to change without notice, at developer's discretion. 4. Actual area may vary from the stated area. 5. Drawings not to scale. 6. All images used are for illustrative purposes only and do not represent the actual size, features, specifications, fittings, and furnishings. 7. The developer reserves the right

EMAA

# DUBAI CREEK HARBOUR

## SURF AT CREEK BEACH

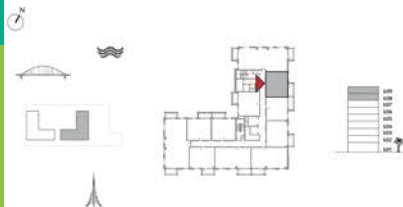
BUILDING 2

LEVEL 8, 9

UNIT 802, 902

1 BEDROOM

APARTMENT AREA	55.32 SQ.M.	595.46 SQ.FT.
BALCONY AREA	8.40 SQ.M.	90.42 SQ.FT.
TOTAL AREA	63.72 SQ.M.	685.88 SQ.FT.



OR PLAN 1. All dimensions are in imperial and metric, and measured from finish to finish excluding construction tolerances. 2. All materials, dimensions, and drawings are approximate only. 3. Information is subject to change without notice, at developer's discretion. 4. Actual area may vary from the stated area. 5. Drawings not to scale. 6. All images used are for illustrative purposes only and do not represent the actual size, features, specifications, fittings, and furnishings. 7. The developer reserves the right

EMAA

# DUBAI CREEK HARBOUR

## SURF AT CREEK BEACH

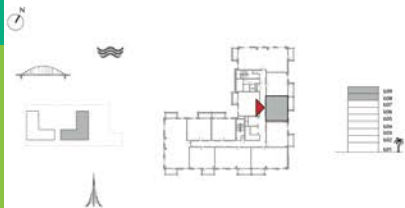
BUILDING 2

LEVEL 8, 9

UNIT 803, 903

1 BEDROOM

APARTMENT AREA	55.48 SQ.M.	597.18 SQ.FT.
BALCONY AREA	8.40 SQ.M.	90.42 SQ.FT.
TOTAL AREA	63.88 SQ.M.	687.60 SQ.FT.



OR PLAN 1. All dimensions are in imperial and metric, and measured from finish to finish excluding construction tolerances. 2. All materials, dimensions, and drawings are approximate only. 3. Information is subject to change without notice, at developer's discretion. 4. Actual area may vary from the stated area. 5. Drawings not to scale. 6. All images used are for illustrative purposes only and do not represent the actual size, features, specifications, fittings, and furnishings. 7. The developer reserves the right

EMAA



# DUBAI CREEK HARBOUR

## SURF AT CREEK BEACH

BUILDING 2

LEVEL 8, 9

UNIT 804, 904

1 BEDROOM

APARTMENT AREA	59.35 SQ.M.	638.84 SQ.FT.
BALCONY AREA	7.40 SQ.M.	79.65 SQ.FT.
TOTAL AREA	66.75 SQ.M.	718.49 SQ.FT.



# DUBAI CREEK HARBOUR

## SURF AT CREEK BEACH

BUILDING 2

LEVEL 8, 9

UNIT 805, 905

2 BEDROOM

APARTMENT AREA	83.31 SQ.M.	896.74 SQ.FT.
BALCONY AREA	8.40 SQ.M.	90.42 SQ.FT.
TOTAL AREA	91.71 SQ.M.	987.16 SQ.FT.



OR PLAN 1. All dimensions are in imperial and metric, and measured from finish to finish excluding construction tolerances. 2. All materials, dimensions, and drawings are approximate only. 3. Information is subject to change without notice, at developer's discretion. 4. Actual area may vary from the stated area. 5. Drawings not to scale. 6. All images used are for illustrative purposes only and do not represent the actual size, features, specifications, fittings, and furnishings. 7. The developer reserves the right

EMAA

# DUBAI CREEK HARBOUR

## SURF AT CREEK BEACH

BUILDING 2

LEVEL 8, 9

UNIT 806, 906

2 BEDROOM

APARTMENT AREA	83.71 SQ.M.	901.05 SQ.FT.
BALCONY AREA	8.40 SQ.M.	90.42 SQ.FT.
TOTAL AREA	92.11 SQ.M.	991.47 SQ.FT.



OR PLAN 1. All dimensions are in imperial and metric, and measured from finish to finish excluding construction tolerances. 2. All materials, dimensions, and drawings are approximate only. 3. Information is subject to change without notice, at developer's discretion. 4. Actual area may vary from the stated area. 5. Drawings not to scale. 6. All images used are for illustrative purposes only and do not represent the actual size, features, specifications, fittings, and furnishings. 7. The developer reserves the right

EMAA

DUBAI CREEK  
HARBOUR

SURF AT  
CREEK BEACH

BUILDING 2

LEVEL 8, 9

UNIT 807, 907

1 BEDROOM

APARTMENT AREA	58.72 SQ.M.	632.06 SQ.FT.
BALCONY AREA	7.40 SQ.M.	79.65 SQ.FT.
TOTAL AREA	66.12 SQ.M.	711.71 SQ.FT.



# DUBAI CREEK HARBOUR

## SURF AT CREEK BEACH

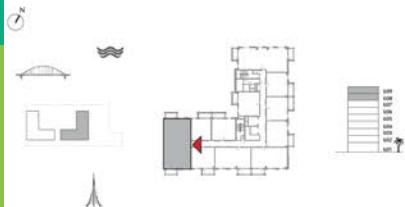
BUILDING 2

LEVEL 8, 9

UNIT 808, 908

### 3 BEDROOM

APARTMENT AREA	126.98 SQ.M.	1366.80 SQ.FT.
BALCONY AREA	14.79 SQ.M.	159.20 SQ.FT.
TOTAL AREA	141.77 SQ.M.	1526.00 SQ.FT.



OR PLAN 1. All dimensions are in imperial and metric, and measured from finish to finish excluding construction tolerances. 2. All materials, dimensions, and drawings are approximate only. 3. Information is subject to change without notice, at developer's discretion. 4. Actual area may vary from the stated area. 5. Drawings not to scale. 6. All images used are for illustrative purposes only and do not represent the actual size, features, specifications, fittings, and furnishings. 7. The developer reserves the right

EMAA

# DUBAI CREEK HARBOUR

## SURF AT CREEK BEACH

BUILDING 2

LEVEL 8, 9

UNIT 809, 909

1 BEDROOM

APARTMENT AREA	55.56 SQ.M.	598.04 SQ.FT.
BALCONY AREA	8.40 SQ.M.	90.42 SQ.FT.
TOTAL AREA	63.96 SQ.M.	688.46 SQ.FT.



DUBAI CREEK  
HARBOUR

SURF AT  
CREEK BEACH

BUILDING 2

LEVEL 8, 9

UNIT 810, 910

1 BEDROOM

APARTMENT AREA	55.56 SQ.M.	598.04 SQ.FT.
BALCONY AREA	8.40 SQ.M.	90.42 SQ.FT.
TOTAL AREA	63.96 SQ.M.	688.46 SQ.FT.



# DUBAI CREEK HARBOUR

## SURF AT CREEK BEACH

BUILDING 2

LEVEL 8, 9

UNIT 811, 911

1 BEDROOM

APARTMENT AREA	55.46 SQ.M.	596.97 SQ.FT.
BALCONY AREA	7.60 SQ.M.	81.81 SQ.FT.
TOTAL AREA	63.06 SQ.M.	678.78 SQ.FT.





# DUBAI CREEK HARBOUR SURF

FOR MORE INFORMATION PLEASE CONTACT



STAY AHEAD, INVEST SMART

📞 +971 55 476 7630

☎ +971 4 368 7878

✉ info@afsrealestate.com

🌐 www.afsrealestate.com



DUBRICKS

POSSIBILITIES ARE LIMITLESS

📞 +971 50 674 2020

☎ +971 4 368 7878

✉ info@dubricks.com

🌐 www.dubricks.com

## EMAAR